



Premium Oil Furnaces - SPECIFICATION GUIDE

FEATURES

- ENERGY STAR® rated at **ALL** firing rates with optional ECM Motor
- AFUE 86% - 88.6%
- Non-refractory Combustion Chamber
- Air Conditioning Ready (1230 cfm - 1910 cfm @ 0.50" WC)
- Safe and Easy-to-use Electronic Control



KLR



KLF



KHM

Firing Rate Specifications		Oil Ratings				Burner Options				Order #	Blower Motor Options			
		Inputs		Outputs	AFUE	Chimney			DV		ECM		PSC	
		Model	Style	G.P.H.	MBH	MBH	%	Riello	Beckett		Carlin	Riello	1/2 HP	3/4 HP
KLR-100	Lowboy Rear Breach	0.55 0.65 0.75	77 91 105	66 79 91	86.2 to 87.1	F3	AFG-L2	EZ	BF3	KLR-EC-A100-03			X	
										KLR-EC-A100-H3	X			
KLR-200	Lowboy Rear Breach	0.85 1.00 1.15	119 147 161	102 126 139	86.5 to 87.8	F5	AFG-F	EZ	BF5	KLR-EC-A200-05				X
										KLR-EC-A200-H5		X		
KLF-100	Lowboy Front Breach	0.55 0.65 0.75	77 91 105	66 79 91	86.2 to 87.1	F3	AFG-L2	EZ	BF3	KLF-EC-A100-03			X	
										KLF-EC-A100-H3	X			
KLF-200	Lowboy Front Breach	0.85 1.00 1.15	119 140 154	102 119 132	86.3 to 88.6	F5	AFG-F	EZ	BF5	KLF-EC-A200-05				X
										KLF-EC-A200-H5		X		
KHM-100	Highboy Multi Position Front Breach	0.55 0.65 0.75	77 91 105	66 79 91	86.0 to 86.8	F3	AFG-L2	EZ	BF3	KHM-EC-A100-03			X	
										KHM-EC-A100-H3	X			
KHM-200	Highboy Multi Position Front Breach	0.85 1.00 1.15	119 147 161	102 126 139	86.4 to 87.5	F5	AFG-F	EZ	BF5	KHM-EC-A200-05				X
										KHM-EC-A200-H5		X		

Dimensional Specifications

Model	Cabinet Dimensions				Filter		Supply Plenum	Return Plenum	Plenum Spacing	Flue Diameter
	Height	Width	Depth	Weight	Size	Qty				
KLR-100	33"	21 1/2"	49 1/8"	204 lbs.	20" x 20" x 2"	1	20" x 20"	20" x 20"	2 1/8"	5"
KLR-200	33"	21 1/2"	55 1/8"	240 lbs.	20" x 20" x 2" 15" x 20" x 2"	1 1	20" x 24"	20" x 22"	2 1/8"	5"
KLF-100	29 3/8"	21 1/2"	53 5/8"	210 lbs.	20" x 20" x 2"	1	18" x 21 3/4"	18" x 20 3/4"	2"	5"
KLF-200	35 1/8"	21 1/2"	52 5/8"	240 lbs.	15" x 20" x 2"	2	20" x 24"	20" x 20"	2"	5"
KHM-100	46 1/4"	21 7/16"	26"	204 lbs.	20" x 20" x 2"	1	20" x 20"	18" x 18"	N/A	5"
KHM-200	49 7/8"	21 7/16"	30"	240 lbs.	20" x 25" x 2"	1	24" x 20"	23" x 18"	N/A	5"

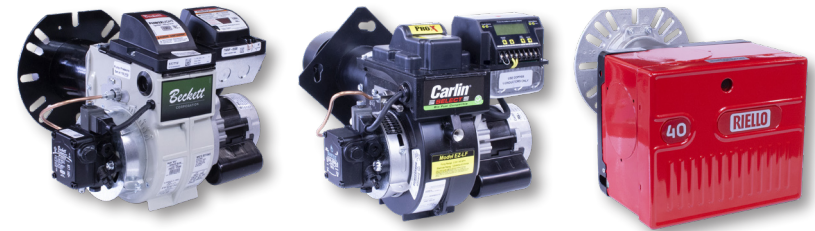
We stand behind every product we engineer and build with a strong warranty.

Limited Lifetime Heat Exchanger Warranty and a limited 5 year parts warranty.





FURNACE BURNER / DIRECT VENT SPECIFICATION GUIDE



Furnaces ship less burner. Order burner in a box kit with furnace.

Burner in a Box Order Number	Burner Model	Vent Type	KLR		KLF		KHM		Nozzle Chart		
			100	200	100	200	100	200	Nozzle Size		Input MBH
A00-BN-4050-60	Beckett AFG-L2	Chimney	X		X		X		.50 x 60W .60 x 60W .65 x 60W	77 91 105	66 78 90
A00-BN-F3N0-60	Riello 40-F3	Chimney	X		X		X		.40 x 70A .60 x 70W .65 x 70W	77 91 105	67 79 91
A00-BN-EZLF-50	Carlin EZ LF	Chimney	X		X		X		.50 x 70A .50 x 60B .65 x 60B	74 89 103	64 76 87
A00-BN-4050-90	Beckett AFG-F	Chimney		X		X		X	.75 x 70B .85 x 70B 1.00 x 70B	119 140 154	102 119 132
A00-BN-F5N0-85	Riello 40-F5	Chimney		X		X		X	.75 x 80W .85 x 70W 1.00 x 70W	126 147 161	109 126 139
A00-BN-EZLF-85	Carlin EZ LF	Chimney		X		X		X	.65 x 70W .85 x 70B .85 x 70B	116 138 150	100 115 125
A00-BN-BF3N-60	Riello 40-BF3	Direct Vent	X		X		X		.40 x 70A .60 x 70W .65 x 70W	77 91 105	67 79 91
A00-BN-BF5N-85	Riello 40-BF5	Direct Vent		X		X		X	.75 x 80W .85 x 70W 1.00 x 70W	126 147 161	109 126 139

Refer to IOM for efficiency ratings when using alternative nozzles (field supplied). Note: Nozzle shown in **BOLD** depicts the nozzle supplied in the burner box.

Steps for properly ordering a Direct Vent System:

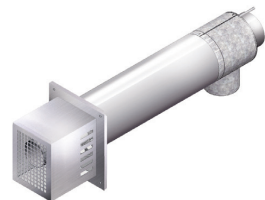
Step 1: Order Burner

100 Size Riello 40-BF3
A00-BN-BF3N-60
200 Size Riello 40-BF5
A00-BN-BF5N-85



Step 2: Order Termination

Coaxial SS Termination
3DV-00-TERM-20



Step 3: Order Vent Flue Pipe Kit

5" x 10' - 3DV-FM-KIT4-0A
5" x 15' - 3DV-FM-KIT4-1A
5" x 20' - 3DV-FM-KIT4-2A



Step 4: Order Optional Parts

5" x 90° Termination Elbows
3DV-00-ELBOW-04

